



Restore to a SSD Drive

How To Set The Correct SSD Alignment

Version 4.0 +

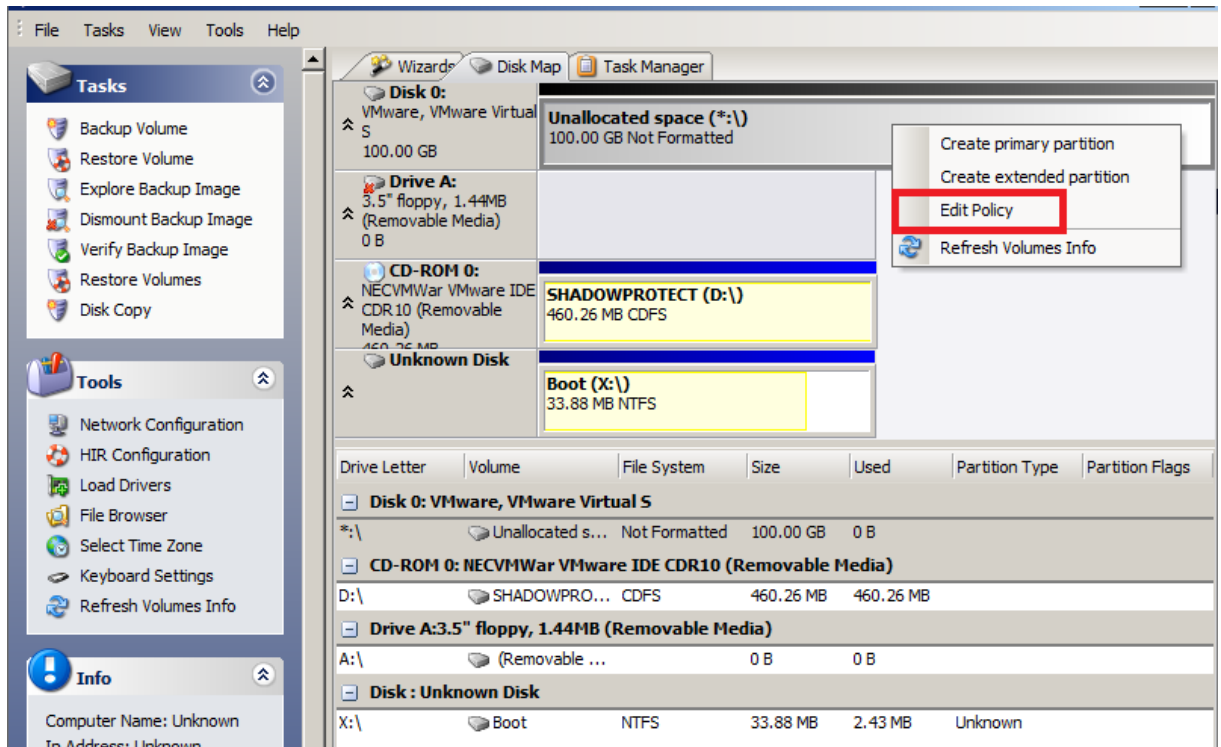
Keywords

Datum 22.06.2011



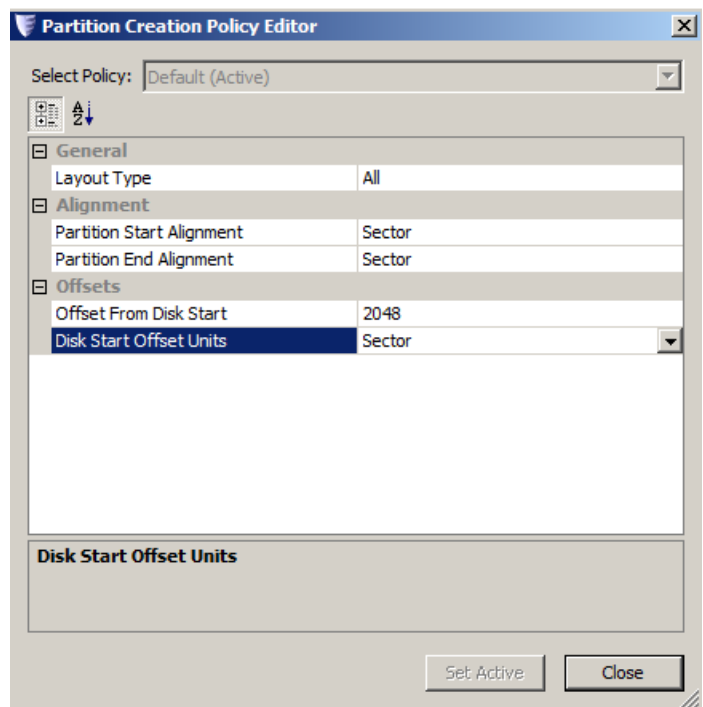
STORAGECRAFT™
Technology Corporation

1. Make sure the original Source disk is not in the system
2. Connect the new SSD/Advanced Format drive
3. Boot into the ShadowProtect Recovery Environment CD (Recommended environment)
4. Select the blank disk (should be marked as "Unallocated space")

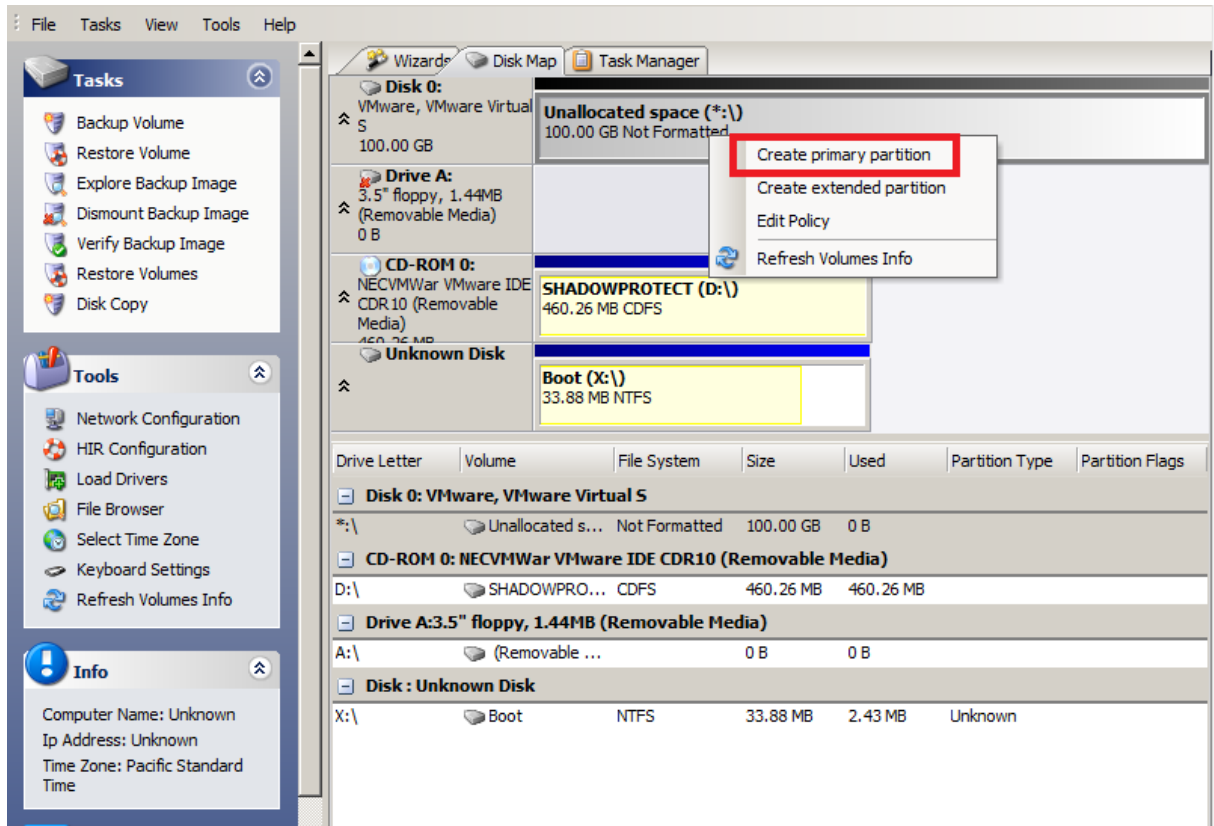


5. Right-mouse-click and select the option "Policy". This defines the partition creation, including start offset.

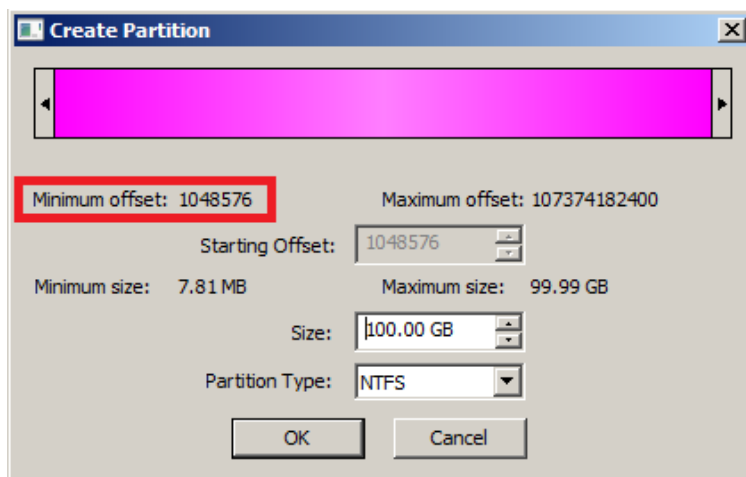
Set the following:
 Partition Start Alignment = **Sector**
 Partition End Alignment = **Sector**
 Offset from Disk Start = **2048**
 Disk Start Offset Units = **Sector**



- Select Close
- Select the disk again, right-mouse-click and select "Create Primary Partition"



- A pop-up window will appear with a pink bar showing the partition layout. If you correctly set the partition Policy correctly you should see that the minimum start offset should be at 1MB (i.e. LBA=2048). In other words, you should see: "Minimum offset:1,048,576". This is the byte offset and is equivalent to LBA=2048 for a 512byte/sector drive.



- Adjust the size of the partition as required so that it is slightly larger than the original disk size in the backup and click "OK".

10. You will then be prompted to reboot.

You only ever need to do this on a brand new, initialized disk (i.e. one without an MBR/GPT). Any other time, a reboot is not required after creating the partition.

11. Boot up into ShadowProtect RE again and run through the backup wizard as normal. Select the newly created partition as the location to restore to and run through rest of the restore